



Annual Report

2025

Serving Utah and Wasatch Counties

750 North Freedom Blvd.
Provo, Utah 84601

(801) 373-4760
www.wasatch.org

Executive Message

On behalf of Wasatch Behavioral Health (WBH), we are honored to present this annual report to the Board of County Commissioners, our local and state government officials, allied agencies, and the citizens of Utah and Wasatch County. We are deeply grateful for the opportunity to collaborate with our partners across public and private sectors who share our commitment to improving lives.

At WBH, we are in the business of helping people—easing suffering, offering education and support, and ultimately saving lives for those facing mental health and substance use challenges. At the same time, we are a business that requires strategic planning, financial stewardship, and operational excellence. We continue to navigate complex funding streams to ensure WBH remains a strong and sustainable organization.

We are especially appreciative of Commissioners Skyler Beltran, Amelia Powers Gardner, and Brandon Gordon for their exceptional support and steadfast commitment to our mission. Their service on our Authority Board is invaluable and deeply appreciated.



This year has brought significant leadership changes, including my appointment as Chief Executive Officer. Having served WBH for the past 30 years in various roles, I am both humbled and honored to lead this organization into the future.

Throughout this report, you will find performance data, demographic insights, financial highlights, and updates on our expansion efforts. As we reflect on the past year, we also look ahead with optimism and determination to continue serving those in need of behavioral health and substance use services.

Thank you for your continued support.

Sincerely,

Randy Huntington, LCSW
Chief Executive Officer

Governing Authority Board

Governance and Oversight

In accordance with state law, the county government is responsible for administering local behavioral health services. Wasatch Behavioral Health operates as a Special Service District of Utah County and is governed under the oversight of the Utah County Commissioners, who serve as the agency's Authority Board. Their leadership ensures accountability, strategic alignment, and continued support for our mission to serve individuals and families affected by mental health and substance use challenges.



Brandon Gordon



Skyler Beltran
Board Chair



Amelia Powers Gardner

Commitment to Accountability and Service

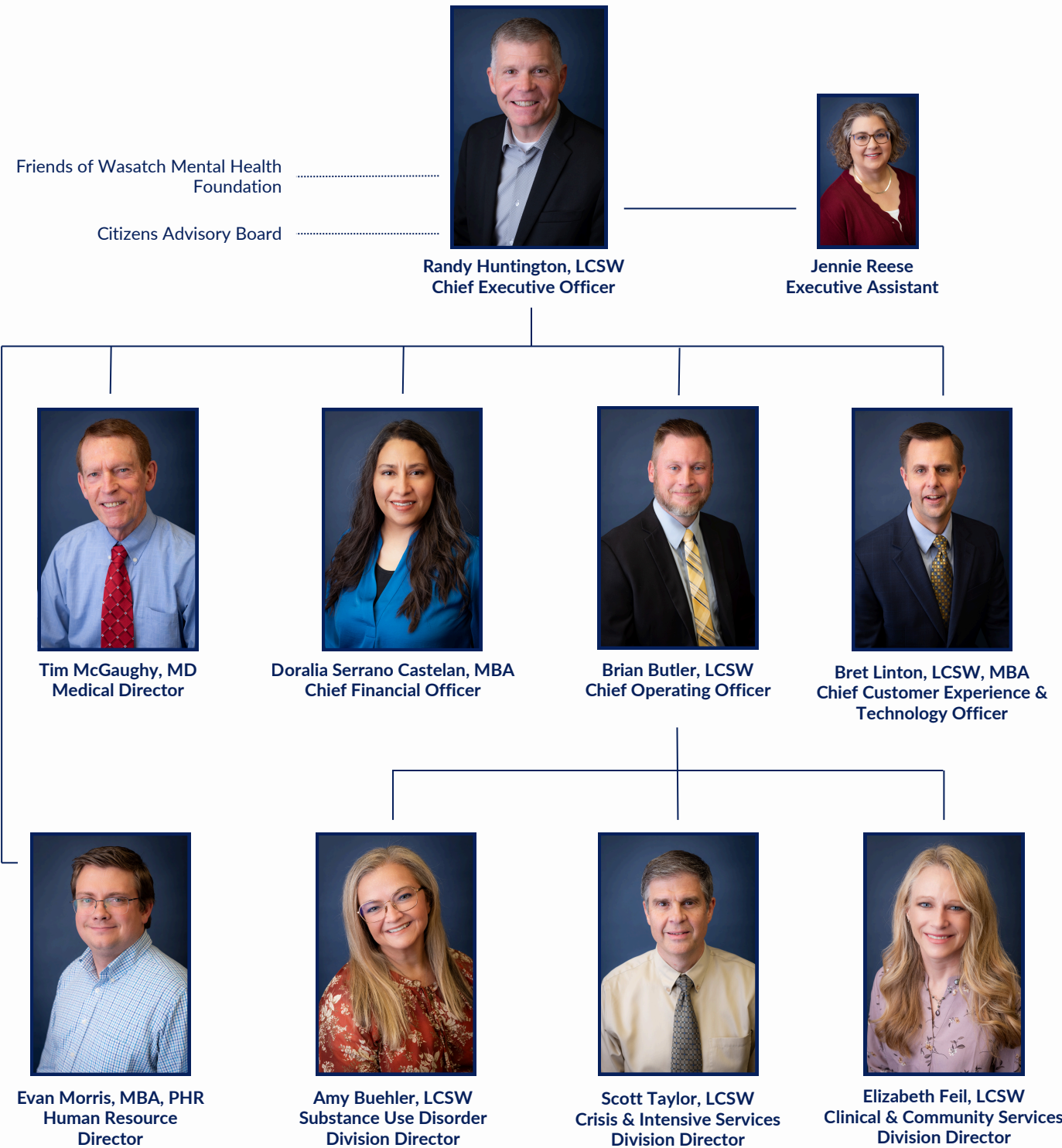
As elected officials, the Authority Board takes its responsibility to the residents of Utah County and the clients of Wasatch Behavioral Health seriously. Their oversight ensures that WBH remains accountable, transparent, and aligned with the needs of our community.

WBH is recognized among Utah's behavioral health centers for its operational efficiency and its ability to maximize services delivered per dollar spent. We are proud to offer a comprehensive array of services to Medicaid-eligible residents of Utah and Wasatch Counties.

Our programs—including the Crisis Receiving Center, Vantage Point, New Vista, Aspire Academy, Early Episode Psychosis Program, Jail Transition Program, School-Based Services, and the Mobile Crisis Outreach Team—extend our reach and impact across a broad population.

We look forward to continuing and expanding our tradition of excellence in service delivery to the communities we serve.

Organizational Structure



Our Mission

Established in 1967, Wasatch Behavioral Health (WBH) is a Public Comprehensive Behavioral Health Center serving Utah and Wasatch Counties. WBH is committed to providing accessible, affordable, and effective behavioral health care for individuals and families across the lifespan. Our services are designed to meet the diverse needs of children, youth, adults, and their families through a continuum of care that includes outpatient therapy, psychiatry, medication management, case management, crisis services, residential programs, and specialized courts such as Mental Health Court and Youth Behavioral Health Court.



WBH is staffed by a multidisciplinary team of licensed professionals, including Psychiatrists, APRNs, Nurses, Clinical Psychologists, Marriage and Family Therapists, Clinical Social Workers, Mental Health Counselors, Substance Use Disorder Counselors, Case Managers, Peer Support Specialists, Residential Service Staff, Family Resource Facilitators, Parent Mentors, and Care Team Assistants. Our administrative and business staff play a vital role in supporting the delivery of high-quality services.

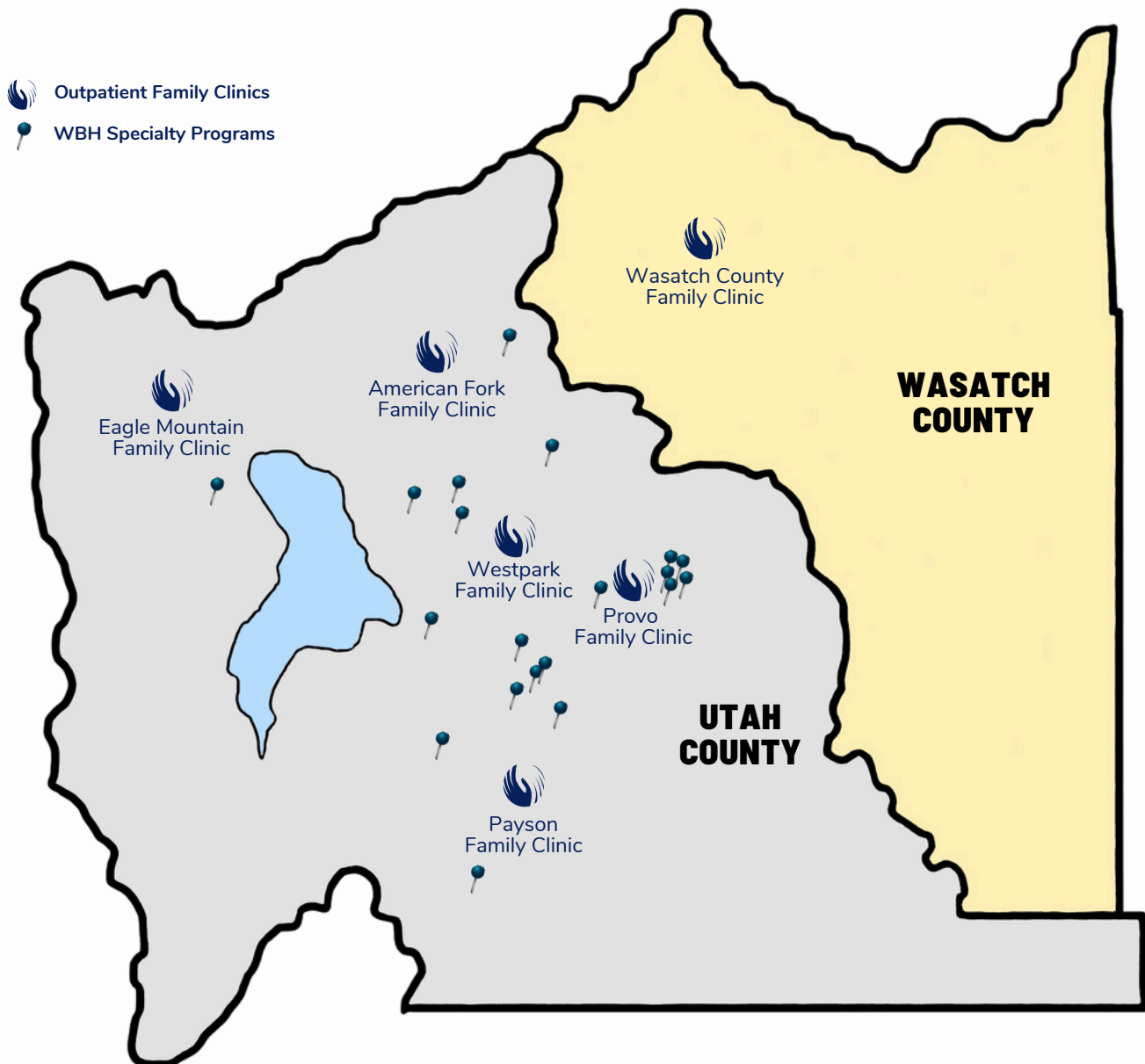
In FY25, WBH continued to expand its reach and impact through community partnerships and internal program development. Looking ahead to FY26, our goals include strengthening integrated care models, enhancing data-driven outcomes, and increasing access to behavioral health services for underserved populations.

Operational Areas

A Targeted Approach

To meet the needs of the community, WBH has strategically placed Family Clinics throughout Utah County, with an additional clinic located in Heber City. In addition to these core service locations, WBH offers specialty programs across the region, ensuring that clients have access to targeted support for mental health and substance use recovery. WBH also provides school-based services on campuses in partnership with Alpine School District, Provo City School District, and Nebo School District, helping students access care in familiar and supportive environments.

In an effort to provide integrated healthcare, WBH has co-located with Mountainlands Community Health Center at the Westpark Family Clinic, Payson Family Clinic, and the Food and Care Coalition, with plans to expand this partnership to future locations. This collaboration enhances access to both primary care and behavioral health services in a unified setting.



Scope of Services

State Mandated Services

- Individual & Group Psychotherapy
- Therapeutic Behavioral Services
- Mental Health Assessment
- Psychiatric Diagnostic Evaluation
- Psychological Testing
- Pharmacologic Management
- Nurse Medication Management
- Case Management
- Peer Support
- Assertive Community Treatment
- Residential Care & Services
- Mobile Crisis Outreach Teams
- Crisis Residential Support
- Adult & Youth Receiving Centers
- Vocational Training
- Psychosocial Rehabilitative Services
- Skills Development
- Psychoeducational Training
- Respite Services
- Supportive Living
- Substance Use Disorder Residential Treatment
- Residential Withdrawal Management



Additional Services Provided

- Adult Mental Health Court
- Housing Services
- Jail Medication Services
- Nursing Home Services
- Autism Treatment
- Emergency Counseling
- Youth Sexual Offender Treatment
- Domestic Violence Treatment
- Homeless Outreach
- Intensive Residential Treatment
- Contracted Services
- Virtual Psychotherapy
- Jail Transition Services
- Prevention/Recovery for Early Psychosis
- Representative Payee Services
- Methadone Dosing
- Inpatient Care & Services
- Community Consultation & Education
- School-Based Services
- Drug Court Support
- Urine Analysis Laboratory Services
- Intensive Adolescent Female Treatment
- Youth Behavioral Health Court
- Post-Adoption Treatment

Performance Data

Data	
Number of New Admits	8,028
Number of Patients Served	13,374
Inpatient Admissions	350
Inpatient Unduplicated Admissions	308

Bed Days	
Crisis Residential Services	506
Foothill Detox	888
Receiving Center	1,894
Vantage Point	3,167
Aspire Academy	2,605
Inpatient	2,876
Adult Residential Intensive (IRT)	5,102
Substance Use Disorder Residential	10,984
Adult Residential Supportive (SRT)	10,720
Independent Housing	18,864
TOTAL BED DAYS	57,606

TREATMENT (HOURS)	Mental Health	Substance Use Disorder	Totals
Evaluation/Testing	15,163	2,786	17,949
Individual/Family Treatment	68,514	7,584	76,098
Group Treatment	23,902	36,649	60,551
Med. Management MD (Encounters)	15,421	2,043	17,464
Med. Management RN (Encounters)	28,560	4 58	29,018
Skills Development/Adult	57,661	31,822	89,483
Skills Development/Youth	93,857	-----	93,857
Behavior Management	44,948	1,653	46,601
Case Management	43,507	5,491	48,998
Peer Support Services	3,804	2,063	5,867
Psych Testing	4,051	-----	4,051
Mobile Crisis Outreach Team	1,324	-----	1,324
ATR Vouchers	-----	6,993	6,993
Methadone Treatment	-----	15,948	15,948
Receiving Center	1,269	-----	1,269
Drug Testing (encounters)	-----	23,449	23,449
TREATMENT TOTALS			538,920

Fiscal Year 2025 Highlights

Program Expansion & Service Enhancements

- Relocated all outpatient Substance Use Disorder programs to a new facility in Orem, improving accessibility and coordination.
- Launched an Intensive Outpatient Program (IOP) for state prison inmates at Wasatch County Jail; graduated 9 individuals and currently supporting 8 more.
- Integrated co-occurring SUD treatment at family clinics and implemented an ADHD group in outpatient services.
- Began providing Esketamine treatment at Westpark Family Clinic for severe depression cases.
- Initiated contract and referral process for Transcranial Magnetic Stimulation (TMS) treatment.
- Started a therapeutic parent support group for those who have stayed at Vantage Point.

Clinical & Training Initiatives

- UA Lab received CLIA recertification.
- Increased monthly SURE administration to 60% for clients with primary SUD diagnosis.
- Provided ASAM training to clinicians in family clinics to integrate SUD and mental health treatment.
- Conducted first CIT Youth training for police officers with Alpine School District.
- WBH received a maternal mental health grant; trained 16 clinicians and delivered community trainings to 22 programs.

Community Engagement

- WBH clinicians and support staff provided over 365 hours of behavioral health education to approximately 6,500 people at community events.
- WATCH participated in the Utah County Warming Center, providing housing resources.
- Wasatch County Prevention team hosted a Family Dinner in the Park event with 680 attendees, including 80 from the Latino community, supporting the Parents Empowered campaign.
- School-based therapists ran summer groups for students with high behavioral health needs.

Client Support & Outcomes

- Assisted over 1,000 clients in obtaining or requalifying for funding.
- Wasatch House provided vocational training to 221 individuals and supported 46 members in employment.

Technology & Infrastructure

- Upgraded network infrastructure and implemented cybersecurity isolation measures.
- Migrated to a modern phone system with enhanced capabilities.
- Developed Power BI dashboards for real-time program data access.

Fiscal Year 2026 Goals

Program Expansion & Service Enhancements

- Implement a new intensive outpatient program for families raising adopted or non-biological children.
- Launch a children's therapeutic group to expand youth services within the Promise program.
- Open a second Bridge Team in North Utah County (pending funding) to enhance outreach and support.

Training & Workforce Development

- Train two new staff members (one Clubhouse member, one administrator) in Clubhouse Comprehensive training at an accredited base.
- Conduct a quarterly meeting to empower case managers to provide additional SUD client services (Medicaid applications, budgeting, transportation).
- Complete an employee salary study to support equitable compensation and workforce planning.

Technology & Infrastructure

- Begin building a client portal with self-scheduling to improve access and streamline service delivery.
- Migrate to Microsoft 365, including a new email system for improved communication and collaboration.

Community Partnerships

- Meet with new school district administrators (post-Alpine division) to renew SBS contracts and pursue an additional contract with Nebo School District.

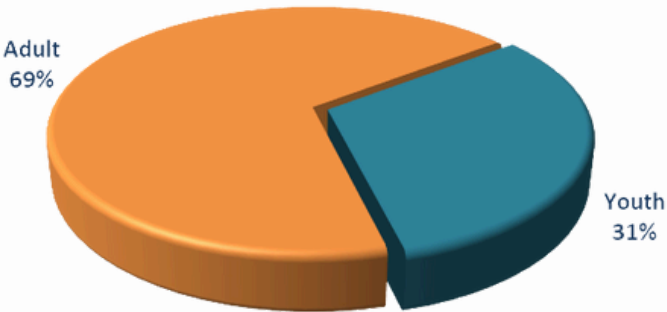
Clinical & Client Care Goals

- Ensure all Wasatch House members have a wellness objective in their recovery goals.
- Train and equip all family clinics to provide general outpatient substance use treatment by fiscal year-end.
- Explore outpatient transition from Vantage Point to adult living curriculum to implement with our oldest youth clients (16-17 years).

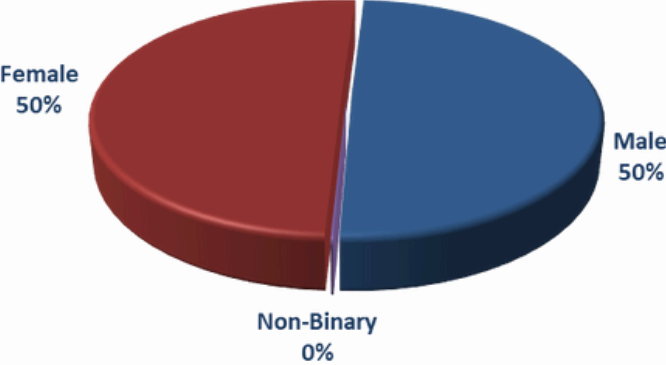


Demographic Data

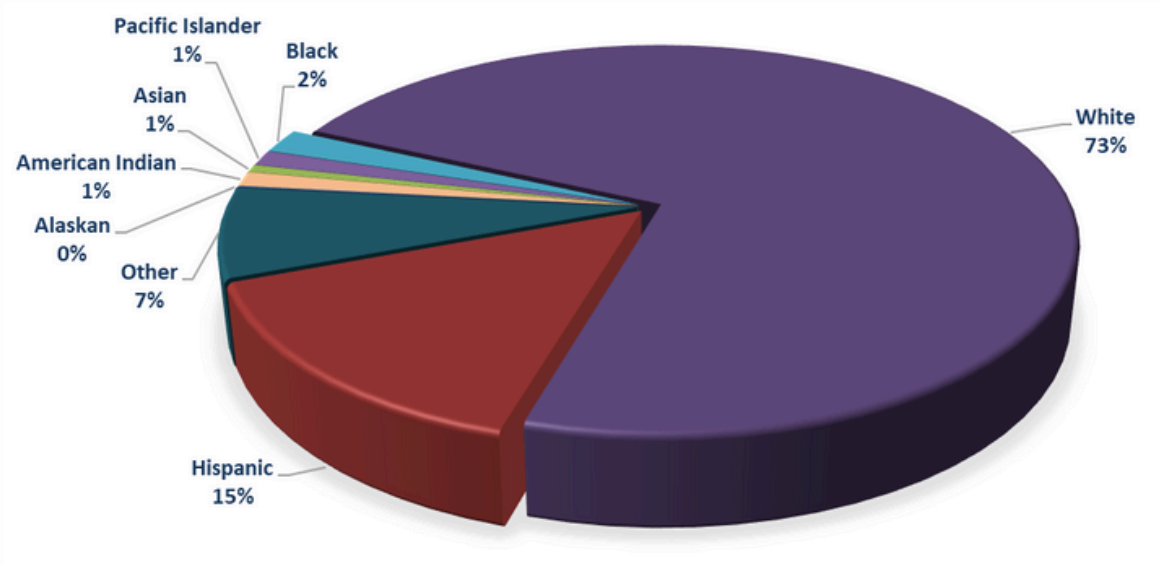
Clients Served By Age



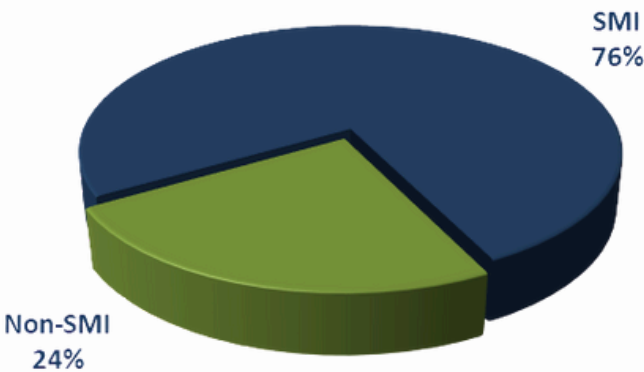
Clients Served By Gender



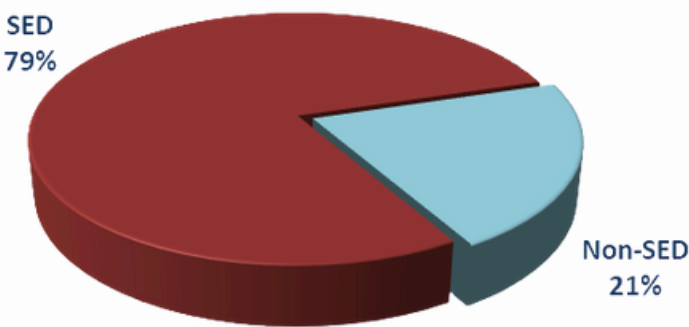
Ethnicities



SMI Adult Clients

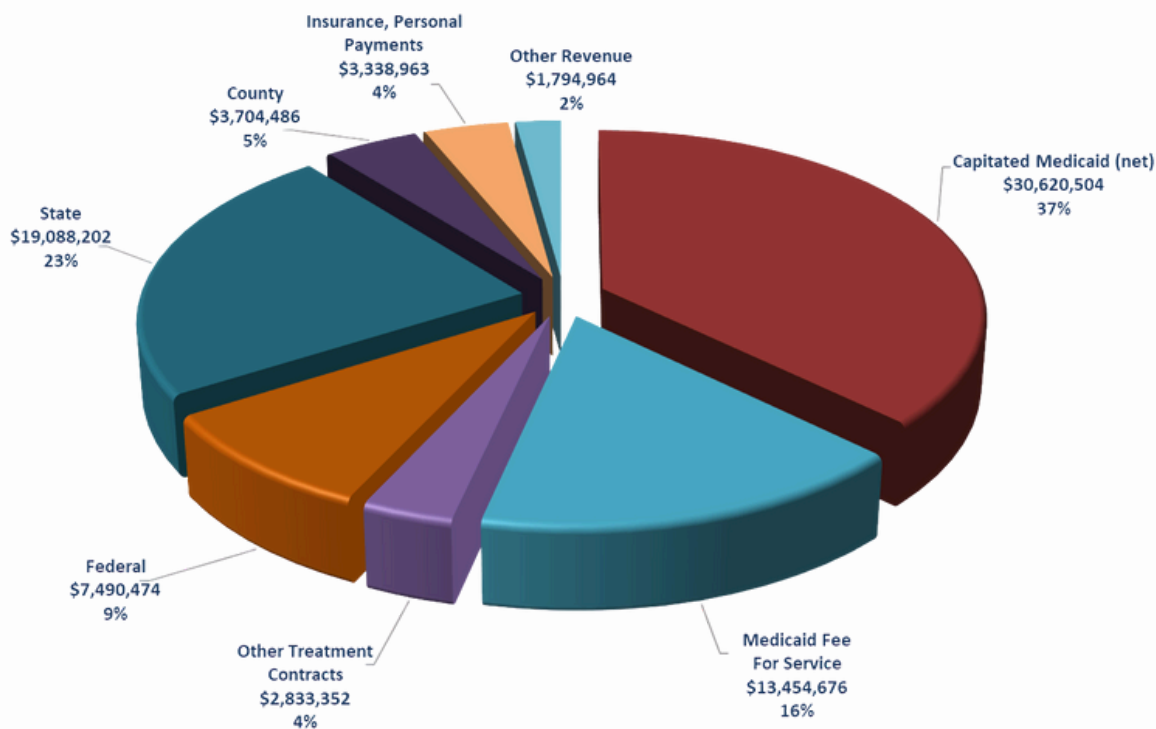


SED Youth Clients

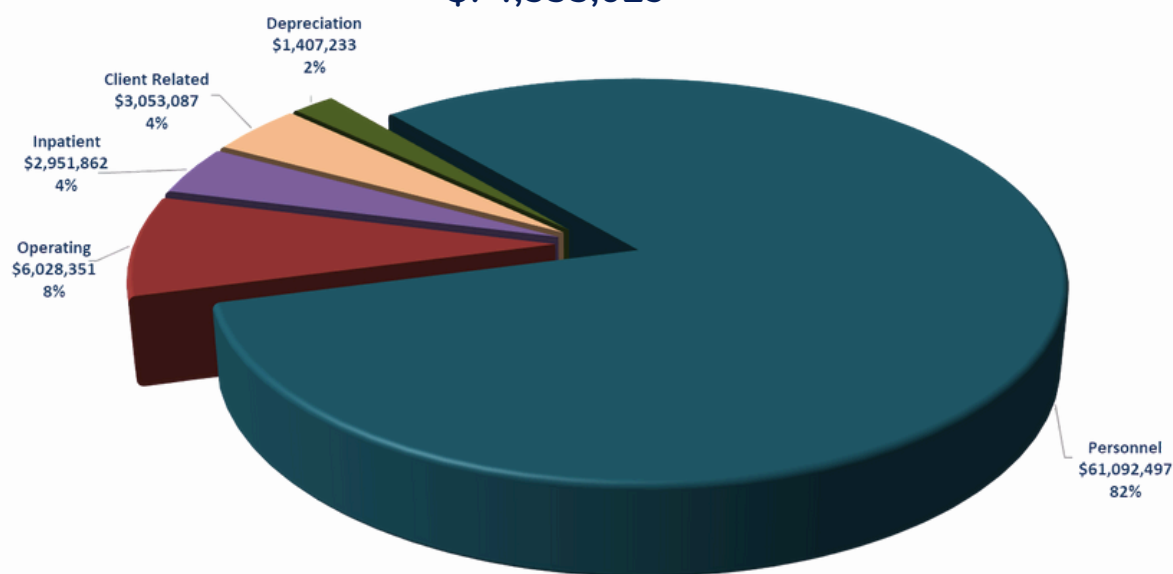


Financial Data

FY2025 Total Revenue By Source
\$82,361,894*



FY2025 Expenditures
\$74,533,029*



*Unaudited Data

Clinical & Community Services Division



Elizabeth Feil, LCSW
Division Director



Chris Westover, LCSW
Program Manager

Westpark Family Clinic
Mountain Peaks Counseling
Clerical Support Services



Bryant Jenks, LMFT
Program Manager

School Based Services
Bridge Team
PREP- First Episode Psychosis



Chad Shubin, LMFT
Program Manager

Wasatch County Family Clinic
Wasatch County MCOT



Craig Limb, LCSW
Program Manager

American Fork Family Clinic
Eagle Mountain Family Clinic



Stuart Spendlove, Ph.D.
Program Manager

Psychological Assessment Services
Medical Services



Ilesha Lopez, LCSW
Program Manager

Provo Family Clinic
Payson Family Clinic



David Ockey, LCSW
Program Manager

South Provo Clinic
Representative Payee Services



Tyler Colby, SSW
Clubhouse Director

Wasatch House

Division Summary

The Clinical and Community Services Division provides family outpatient care to individuals recovering from a primary mental health condition in Utah and Wasatch Counties. Services include psychiatry, psychotherapy, case management, and peer support that are delivered in clinics, schools, or client homes. Services are available in person or via telehealth. Our Clubhouse, Supported Housing, Bridge Team, Representative Payee Services, and PREP Team provide specialty care to clients who qualify.

Services

- Individual Therapy
- Group Therapy
- Psychiatry
- Medication Management
- Case Management
- Peer Support
- Psychological Testing
- Representative Payee Services
- School Based Services
- Prevention/Recovery for Early Psychosis
- Supportive Housing Services
- Bridge Team (ACT Model)
- Clubhouse
- Nursing Home Services
- Adult Mental Health Court
- Youth Behavioral Health Court
- PASRR Screening
- Domestic Violence Treatment
- Health Integration Program
- Wasatch County MCOT
- Substance Use Treatment & Prevention
- CIT Police Academy

Quick Facts

- 12,145 Unduplicated clients served
- 182,051 hours of service provided
- 46 Clients were supported in obtaining or maintaining employment at the Clubhouse
- Esketamine treatment available for clients with treatment-resistant depression



Client Testimonial

Wasatch Behavioral Health has been a lifeline for me—truly life-saving. The Payson office is more than a treatment center; it's a sanctuary where I feel safe, welcomed, and free to be myself without fear or shame. The staff's kindness and compassion create an atmosphere.

Every appointment gives me hope and strength to keep going. When I'm in crisis, I focus on making it to my next meeting because I know I'll find support and connection there. This community has shown me that healthy relationships and genuine care exist, and I've built friendships I never thought possible. Thank you for offering a place where people can heal, belong, and rediscover hope.

Substance Use Disorder Division



Amy Buehler, LCSW
Division Director



Susan Leavitt, LCSW
Program Manager

Foothill Residential
Intensive Residential Treatment
Center for Opiate Recovery
Medical Assisted Treatment



Monte Memmott, CMHC
Program Manager

WATCH
Jail Transition Program
Assessment & Referral
Recovery Residence
Jail On Unit Treatment
Drug Court
Recovery Support
Utah County Adult Probation



Iann Westwood, RN
Director of Nursing



Theresa Young, LCSW
Program Manager

Outpatient Treatment for Men
Promise
Youth & Young Adult Treatment
Laboratory Services
Outside Providers

Division Summary

The Substance Use Disorder Division delivers a full spectrum of outpatient and residential services to support recovery for Utah County residents and individuals experiencing substance use issues and homelessness. Services include intake and assessment, detox and residential care, outpatient therapy with case management, a CLIA-certified lab, methadone dispensing, medication-assisted treatment by an addictionologist, peer support, and criminal justice programs.

Services

- Substance Use Assessment & Referral
- Outpatient Treatment for Women
- Outpatient Treatment for Men
- Youth & Young Adult Program
- UA Laboratory
- Methadone Dispensing
- Foothill Residential & Detox Program
- Intensive Residential Treatment
- Peer Support
- Medical Assisted Treatment
- Utah County Alternative Probation
- Drug Courts
- Nursing Services
- Utah County Jail On-Unit Treatment
- Recovery Support
- Recovery Residence
- Jail Transition Program
- Homeless Services & Resources

Quick Facts

- 2758 Unduplicated SUD clients served
- 94 Individuals participated in Drug Court
- 395 Clients served by Medication Assisted Treatment
- 221 Clients accessed services by utilizing opiate settlement funds



Success Story

A young client first engaged with the Substance Use Disorder Division for treatment as a minor and remained in care into adulthood. During a period of homelessness, unstable housing exposed him to unsafe environments that contributed to criminal charges and incarceration. Upon release, he immediately reconnected with treatment, accessed sober living, secured employment, and eventually moved into his own apartment.

Receiving his own keys marked a turning point—his first experience of personal safety and control. He continues to engage in recovery, motivated by this stability. His journey underscores the transformative impact of accessible services and strong community partnerships.

Crisis & Intensive Services Division



Scott Taylor, LCSW
Division Director



Michael King, LCSW
Program Manager

Giant Steps



Justin Yearsley, LCSW
Program Manager

New Vista
Stride
Attachment IOP



Laura Oaks, LCSW
Program Manager

Receiving & Outreach Center
Crisis Residential Support
Mobile Crisis Outreach Team



Amanda Stansfield, LCSW
Program Manager

Children & Youth FAST
Aspire Academy
Inpatient Services
USH Coordination



Cassie Helferich, LCSW
Program Manager

Vantage Point Provo
Vantage Point American Fork

Division Summary

The Crisis and Intensive Services Division provides rapid, compassionate care for individuals in crisis or with acute behavioral health needs, focusing on stabilization and recovery in the least restrictive setting. Services include mobile crisis response, short-term stabilization, specialized preschool programs for children on the autism spectrum, intensive outpatient services, and day treatment options for youth to build emotional regulation and life skills.

Services

- 24/7 Mobile Crisis Outreach Team
- Crisis Receiving & Outreach Center
- Youth Crisis Shelters
- Adult Crisis Residential Support
- Civil Commitment/Guilty With a Mental Condition Coordination
- Female Youth Residential Treatment
- Autism Pre-School
- Children, Youth, & Family Assessment & Stabilization
- Crisis Respite
- Adolescent Full-Day Treatment
- Peer Support
- K-5 Partial Day Treatment
- Utah State Hospital Coordination
- Inpatient Hospital Utilization Review
- Intensive Outpatient Treatment for Post Adoption/Families Raising Non-Biological Children

Quick Facts

- 257 Employees in the division
- 3193 Unduplicated clients served
- 245,765 Direct Care Hours of services provided
- 2949 Potential hospital admissions were diverted to lower levels of care
- 2324 Additional out-of-home placements (foster care, crisis shelter, youth detention, etc.) were prevented



Success Story

The Mobile Crisis Outreach Team (MCOT) responded to a call about a college student planning to jump from a canyon cliff. After contacting 988, the Receiving Center therapist kept the student engaged and persuaded them to meet MCOT at the trailhead. The team transported the student to the Receiving Center for immediate care and developed a safety plan that included contacting their out-of-state parents. Grateful for the intervention, the parents expressed relief and committed to arriving the next morning to support their child.

This coordinated effort exemplifies WBH's commitment to saving lives and providing hope during moments of crisis.

Administrative Services



**Kent Downs, MA
Program Manager**

Building Maintenance
Vehicle Maintenance
Risk Management
Support Services



**Robert Johnson, MACC
Program Manager**

Billing
Funding Coordination
Credentialing



**Amy Hickman, MBA
Program Manager**

Accounting
Payroll



**Mike Wilkins, Ph.D.
Program Manager**

Clinical Performance
Compliance
Medical Records



**Devin Anderson, MSBA, MBA
Program Manager**

Information Services
Information Technology

Directory

Department	Address	City	Zip	Phone
Administrative Offices	750 North Freedom Blvd, Suite 300	Provo	84601	(801) 373-4760
American Fork Family Clinic	578 East 300 South	American Fork	84003	(801) 763-5010
Aspire Academy	371 S Vineyard Road	Orem	84058	(801) 852-2138
Attachment IOP	1161 East 300 North	Provo	84606	(801) 852-4492
Bridge Team	580 East 600 South, Suite 200	Provo	84606	(801) 960-1667
Center for Opiate Recovery	255 South Orem Blvd	Orem	84058	(385) 268-5050
Criminal Justice Programs	255 South Orem Blvd	Orem	84058	(385) 268-5015
Crisis Residential Support	1157 East 300 North	Provo	84606	(801) 852-4510
CY-FAST	1185 E 300 N	Provo	84606	(801) 852-2138
Eagle Mountain Family Clinic	3688 E Campus Dr, Suite 130	Eagle Mountain	84005	(385) 268-6780
Foothill Residential & Detox	3281 N Main	Spanish Fork	84660	(385) 268-5070
Giant Steps Autism Preschool	Multiple Locations			(801) 226-5437
Intensive Residential Treatment	2877 W Center Street	Provo	84601	(801) 852-3320
Medical Records	580 E 600 S, Suite 220	Provo	84606	(801) 373-4760
Medical Services	Multiple Locations			(801) 373-9656
Mobile Crisis Outreach Team	1175 E 300 N	Provo	84606	(801) 494-0880
Mountain Peaks Counseling	750 N Freedom Blvd	Provo	84601	(801) 960-1620
New Vista	1161 E 300 N	Provo	84606	(801) 375-9226
Nursing Home Outreach	750 N Freedom Blvd	Provo	84601	(801) 373-9656
Parkview	1161 E 300 N	Provo	84606	(801) 373-4765
Payson Family Clinic	285 N 1250 E	Payson	84651	(801) 852-3805
PREP Team	580 E 600 S, Suite 200	Provo	84606	(801) 960-1625
Promise	290 E 930 S	Orem	84058	(385) 268-5080
Provo Family Clinic	1165 E 300 N	Provo	84606	(801) 377-1213
Psychological Assessment Services	750 N Freedom Blvd	Provo	84601	(801) 852-1422
Receiving & Outreach Center	1175 E 300 N	Provo	84606	(801) 852-2131
School Based Services	Multiple Locations			(801) 960-1625
South Provo Clinic	580 E 600 S	Provo	84606	(801) 373-7443
Stride	1165 E 300 N	Provo	84606	(801) 319-1142
SUD Intake & Assessment	255 South Orem Blvd	Orem	84058	(385) 268-5000
SUD Men's Outpatient Treatment	255 South Orem Blvd	Orem	84058	(385) 268-5000
SUD UA Lab	255 South Orem Blvd	Orem	84058	(385) 268-5040
SUD Youth & Young Adult Program	255 South Orem Blvd	Orem	84058	(385) 268-5042
Vantage Point North	947 N 880 E	American Fork	84003	(801) 268-5090
Vantage Point Provo	1189 E 300 N	Provo	84606	(801) 373-2215
Wasatch County Family Clinic	55 S 500 E	Heber City	84032	(435) 654-3003
Wasatch County MCOT	1885 W Ute Blvd	Park City	84098	(435) 654-3003
Wasatch House	605 E 600 S	Provo	84606	(801) 373-7440
WATCH Homeless Services	299 E 900 S	Provo	84606	(801) 852-3779
Westpark Family Clinic	750 N Freedom Blvd	Provo	84601	(801) 373-9656

